



35 WESTERN AVENUE, KENNEBUNK
(207) 967-9120 WWW.RIVERTREEARTS.ORG

Maine Art
PAINTINGS AND SCULPTURE

14 WESTERN AVENUE, KENNEBUNK
(207) 967-2803 WWW.MAINE-ART.COM



21 WESTERN AVENUE, KENNEBUNK
(207) 967-6331 WWW.THESHARPEGALLERY.COM



155 PORT ROAD, KENNEBUNK
(207) 967-2900 WWW.MORPHGALLERY.COM

PRELUDE TO



Donna Kabay image

VILLAGE ART WALK'S

PASSPORT



PLEASE JOIN US NEXT YEAR FOR OUR 2017 VILLAGE ART WALKS, RUNNING FROM 5 TO 7 P.M. ON THE SECOND FRIDAY NIGHT MAY-SEPTEMBER, PLUS DECEMBER

VISIT WWW.COKEENNEBUNKS.COM FOR MORE INFORMATION.

Get your **"Passport to Prelude"** book hand-stamped at any 6 of the 10 participating Village Art Walk galleries for your chance to win prizes of art! Take this self-guided tour during the monthly Village Art Walk from 5 to 7 p.m. Friday, Dec. 9, or on your own time during regular gallery hours between Dec. 1-10. Passports must be verified at the Chamber of Commerce kiosk in Lower Village (across the street from H.B. Provisions) by 5 p.m. Saturday, Dec. 10, to be entered into a drawing for prizes. Pick up passports at the Chamber or at any of the participating galleries: Chris Becker Gallery, the Galleries at Morning Walk, Landmark Gallery, Maine Art, Morph Gallery, River Tree Arts, Rusty Fly Gallery, The Sharpe Gallery, Sue Rioux Designs, and Wendy Webster Good Fine Art, The Port Gallery.

(207) 967-0857
www.gokennebunks.com

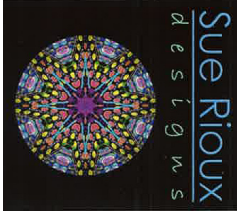
CHRIS BECKER
GALLERY
photographs

127 OCEAN AVENUE, KENNEBUNKPORT
(207) 967-0069 WWW.CHRISBECKERPHOTO.COM

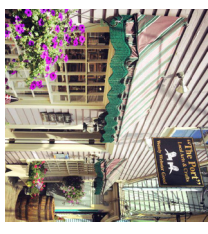


24 OCEAN AVENUE, KENNEBUNKPORT
(208) 982-5398 WWW.SHEPPARDFINEART.COM

180 PORT ROAD, KENNEBUNK
(207) 229-7017



WENDY WEBSTER GOOD FINE ART



11 OCEAN AVENUE, KENNEBUNKPORT
(207) 229-3167 WWW.WENDYWEBSTERGOOD.COM

2 MORNING WALK, KENNEBUNK (207) 408-2236



LANDMARK GALLERY

31 OCEAN AVENUE, KENNEBUNKPORT
(207) 967-0020 WWW.LANDMARKGALLERY.COM